

REC. DIS. UTAH UTAH UTAH U. - 2038(

STATE OF UTAH STATE ROAD COMMISSION

PLANS OF PROPOSED STATE ROAD

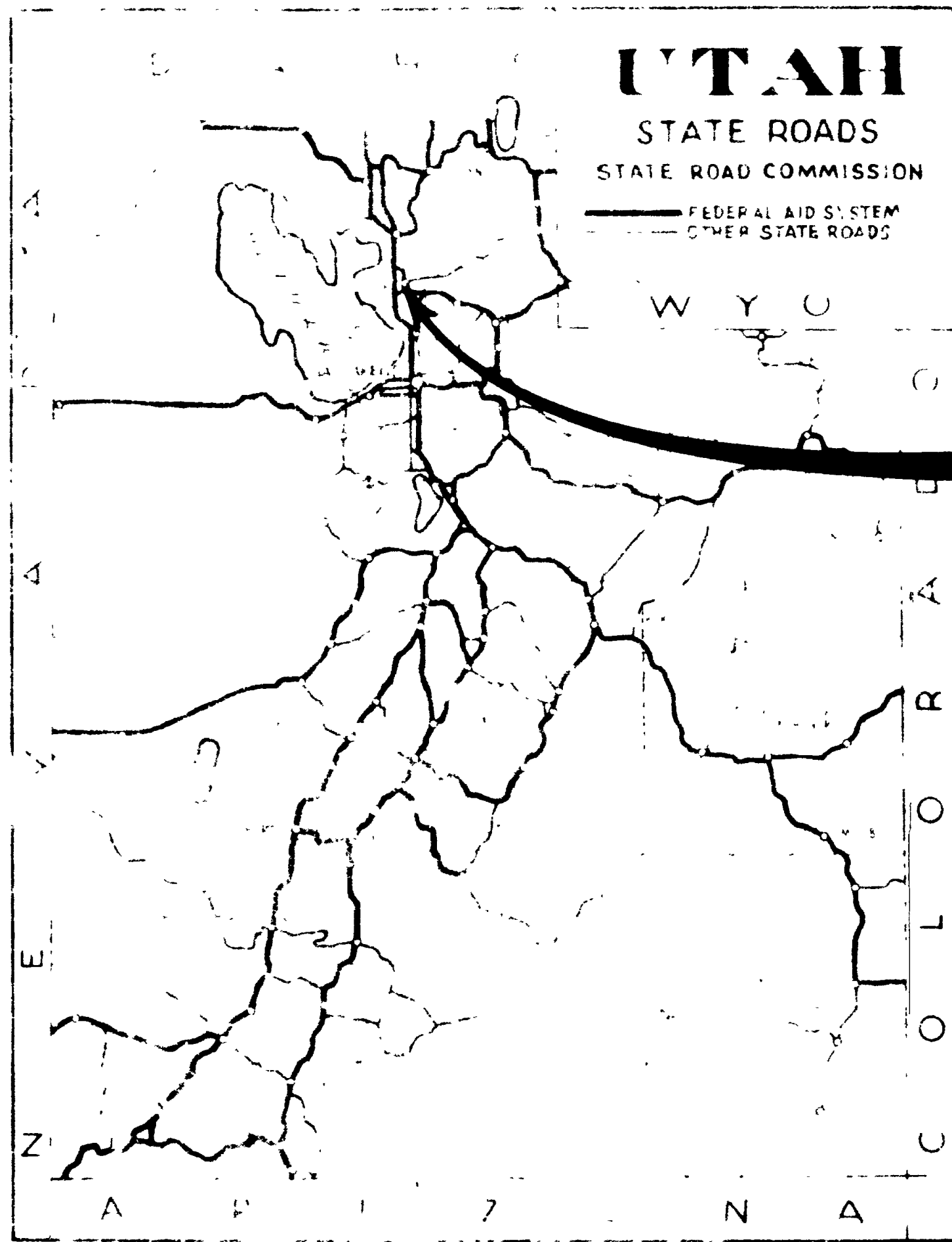
FEDERAL AID PROJECT

AS CONSTRUCTED

I-15-8(37)342
20th. ST., INTERCHANGE
WEBER COUNTY
LENGTH 0.414 MILES
GRADING

RS-0560(3) 20th. ST., I-15 TO WEST URBAN LIMITS WEBER COUNTY
LENGTH 0.599 MILES
STRUCTURE & GRADING

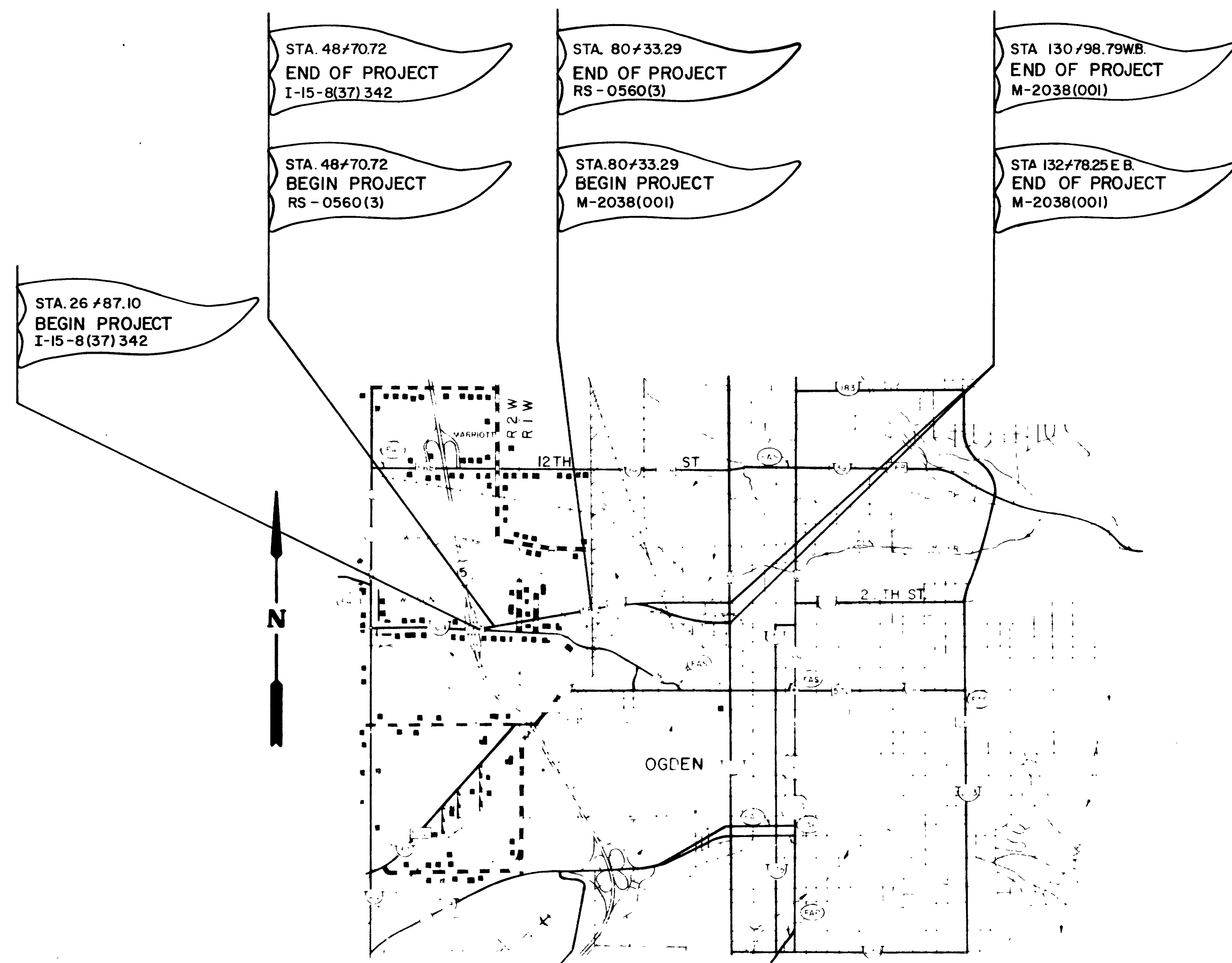
M-2038(001) 20th. ST., WEST URBAN LIMITS TO WALL AVE. WEBER COUNTY
LENGTH 0.972 MILES
STRUCTURES & GRADING



ROADWAY DRAWINGS		
DRAWING NO.	SHEET NO.	DESCRIPTION
I-15-8(37)342		
1		TITLE SHEET
2		TYPICAL CROSS SECTION SHEET
3		SUMMARY SHEET
4		PLAN & PROFILE SHEET
5-6		CHANNELIZATION SHEET
7		SURCHARGE DISTRIBUTION SHEET RS-0560(3)
M-2038(001)		
1		TITLE SHEET
2		TYPICAL CROSS SECTION SHEET
3		SUMMARY SHEET
4-8		PLAN & PROFILE SHEETS
9-11		CHANNELIZATION SHEETS
12		SURCHARGE DISTRIBUTION SHEET
M-2038(001)		
1		TITLE SHEET
2		TYPICAL CROSS SECTION SHEET
3		SUMMARY SHEET
4-10		PLAN & PROFILE SHEETS
11-15		CHANNELIZATION SHEETS
16		SEWER - PLAN & PROFILE SHEET
17-19		RAILROAD RELOCATION SHEETS
20		SURCHARGE DISTRIBUTION SHEET

STANDARD DRAWINGS		
DRAWING NO.	DESCRIPTION	DATE
605-1	FILL HEIGHT FOR PIPE CULVERT	5-7-74
605-2	METAL CULVERT END SECTION	5-7-74
605-3	WATER TIGHT CONNECTING BANDS FOR C.M.P.	4-6-71
605-20	R.C.P. CULVERT	3-12-74
745-1B	CONSTRUCTION NOTIFICATION SIGNS	8-15-73
745-1C	CONSTRUCTION SIGNING BARRICADE	4-13-73
745-6	CONSTRUCTION IDENTIFICATION SIGNS	8-8-72
805-1A	SUPERELEVATION AND WIDENING	9-10-63
805-1B	SUPERELEVATION AND WIDENING	9-10-63

STRUCTURE DRAWINGS		
DRAWING NO.	DESCRIPTION	DATE
RS-0560(3)		
C-613	WEBER RIVER BRIDGE	
M-2038(001)		
C-614	WESTBOUND LANE OVER RAILROAD	
C-615	EASTBOUND LANE OVER RAILROAD	
V-900	STD. SEWER MANHOLE, FRAME AND GRATE TYPE 2	



#139

UTAH STATE DEPARTMENT OF HIGHWAYS

RECOMMENDED FOR APPR. VAL May 1975
Sheldon W. McEntire
CHIEF ROADWAY DESIGN DIVISION

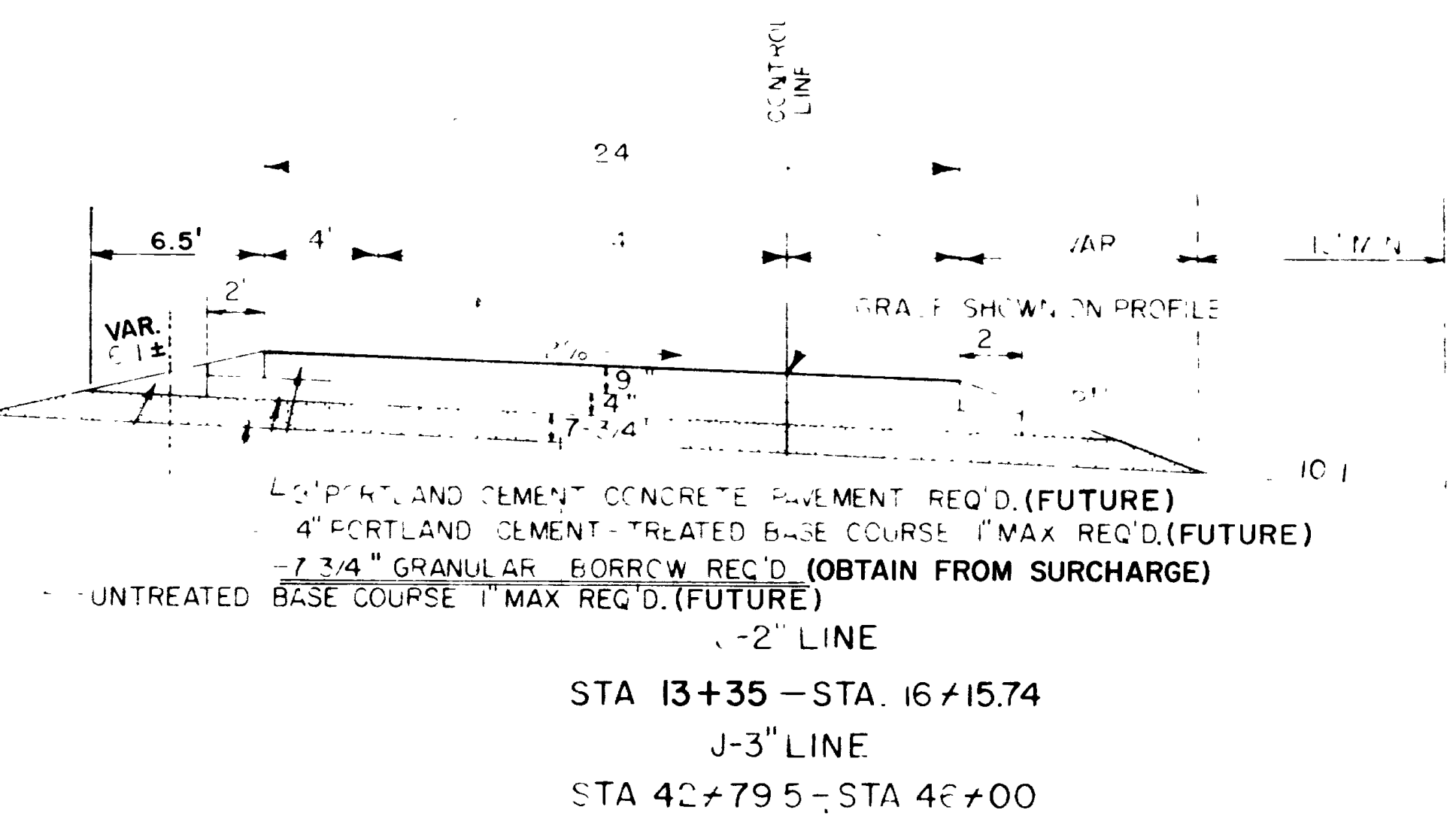
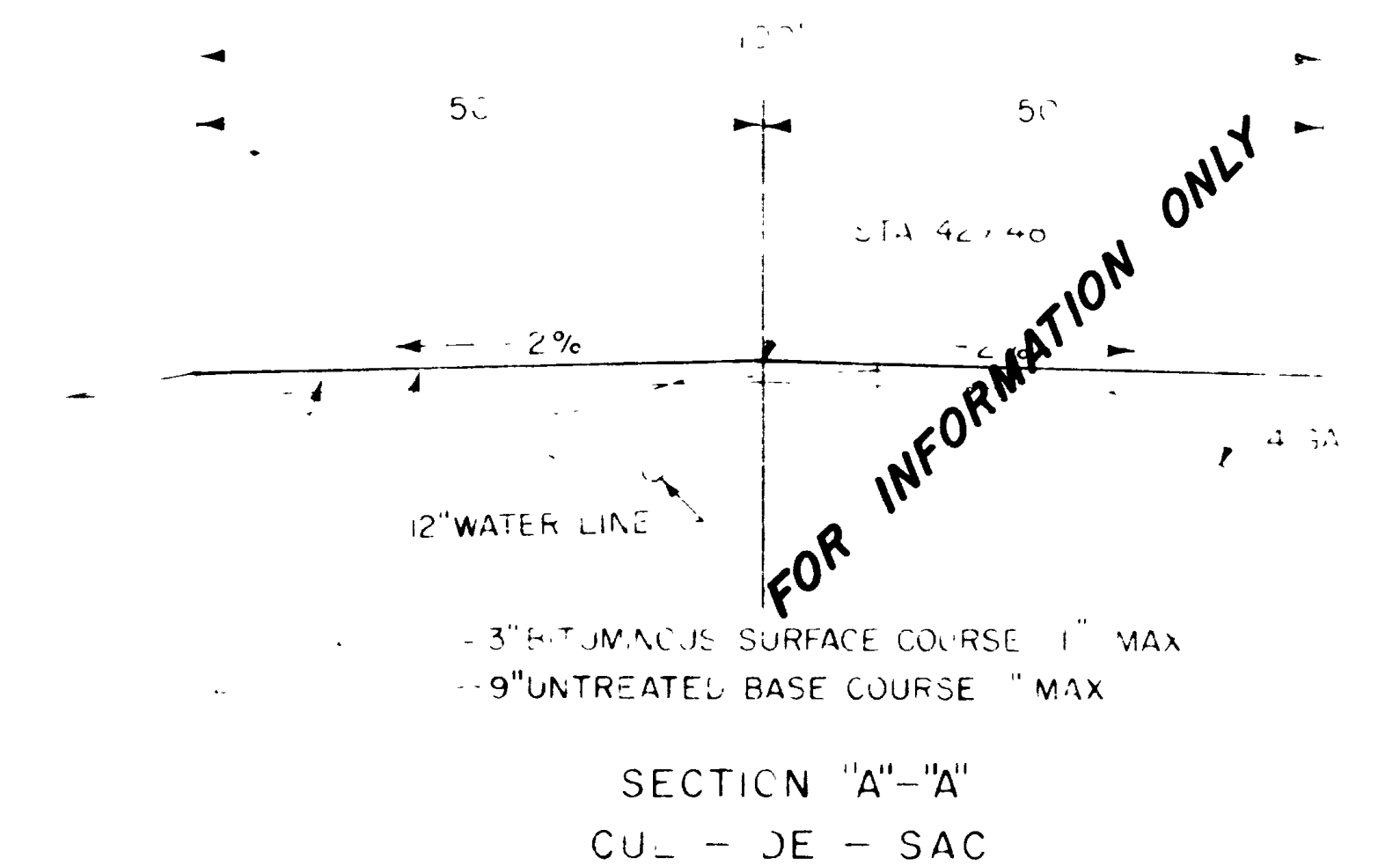
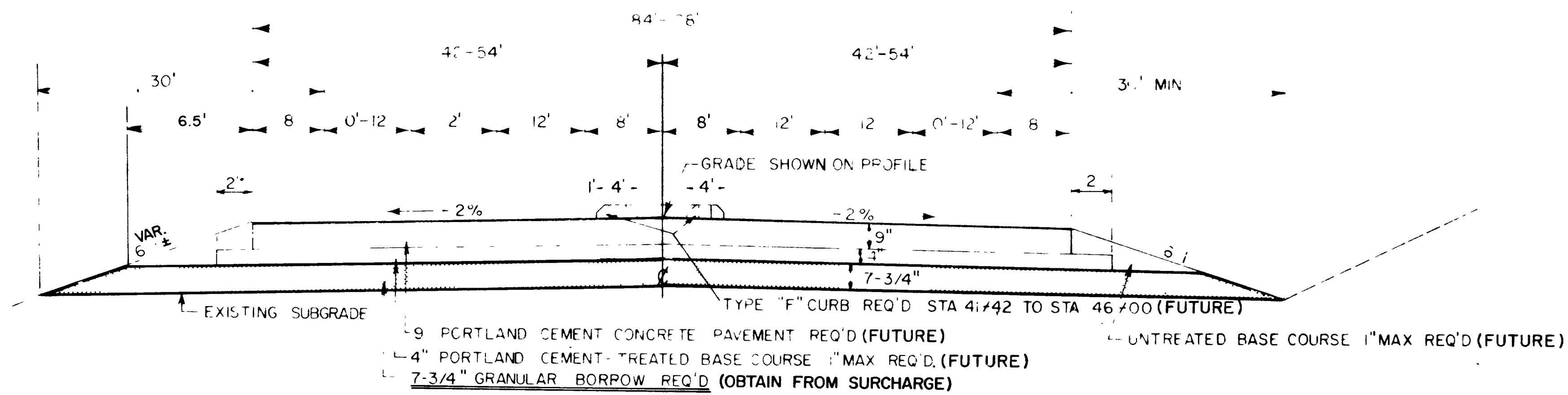
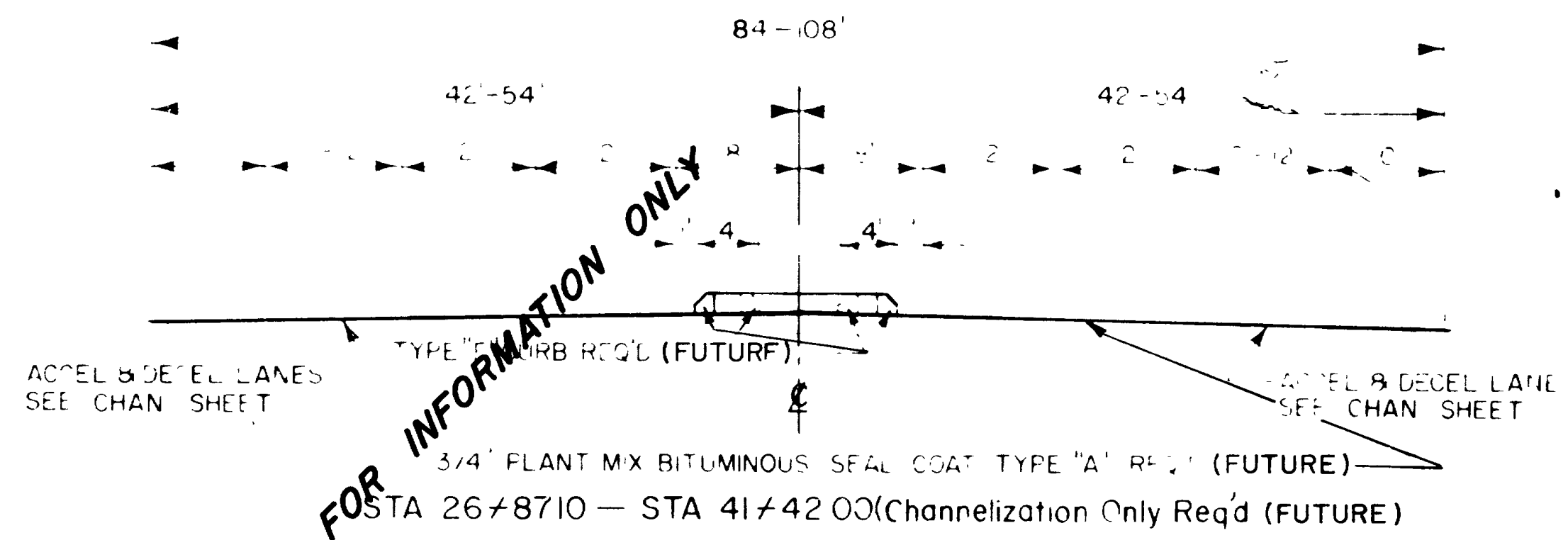
APPROVED May 1975
C. V. [Signature]
STATE HIGHWAY

U.S. DEPARTMENT OF TRANSPORTATION
FEDERAL HIGHWAY ADMINISTRATION

APPROVAL

DATE

CROSS SL

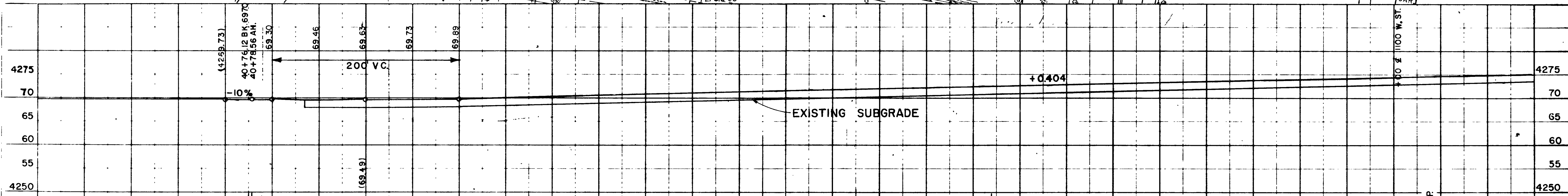
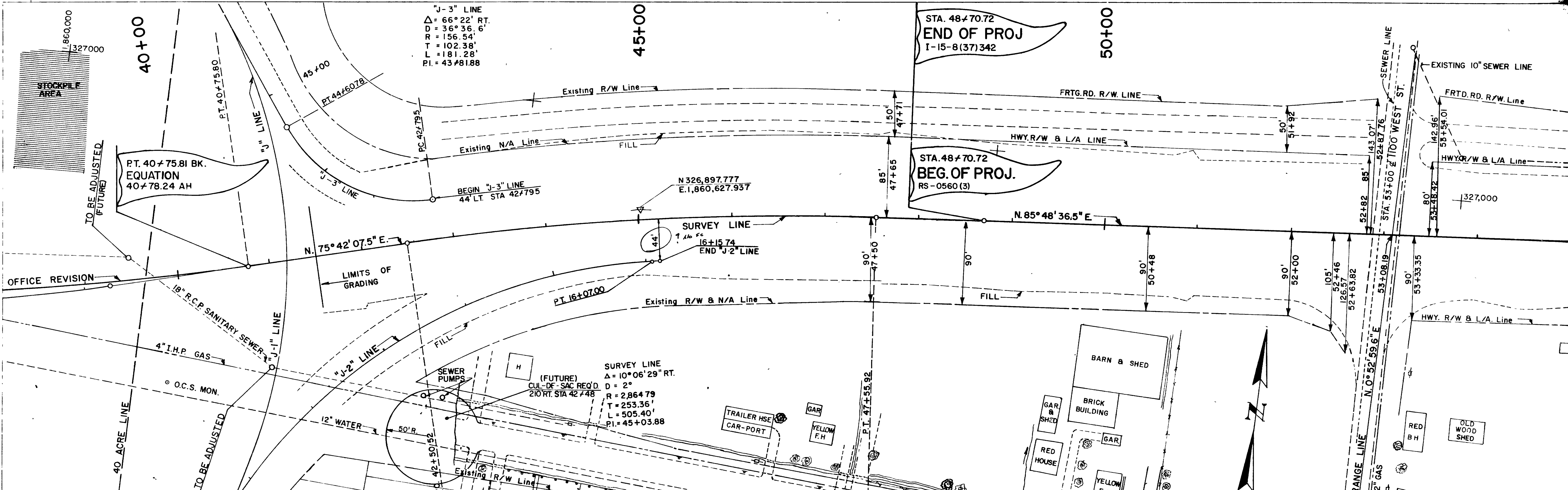


SUPERELEVATE CURVES IN ACCORDANCE WITH STD NO 805-1A & 1B
DESIGN SPEED 60 M P H

STATE DEPARTMENT OF HIGHWAYS			
ROADWAY DESIGN			
20th STREET INTERCHANGE			
TYPICAL CROSS SECTION			
GAB 1/73	RNM 1/73	REVIEW	
FB 11/73	RNM 11/73	DESIGN	JBA 5/75
GAB 11/73	RNM 11/73	CHECK	
4-17-75	H. W. [Signature]	DR. [Signature]	
4-18-75	[Signature]	[Signature]	WEBER
T-15-8(37)342			
2			

PLAN
 CHECKED BY: [Signature]
 DATE: [Date]

PROFILE
 CHECKED BY: [Signature]
 DATE: [Date]



B.M. STA. 40+00
 66 RT. NAIL ON P.P.
 ELEV. 4269.47

EQUATION P.T. 40+75.81 BK
 EQUATION 40+78.24 AH

END OF PROJECT I-15-8(37)342 STA. 48+70.72
 BEGIN OF PROJECT RS-0560(3) STA. 48+70.72

UTAH STATE DEPARTMENT OF HIGHWAYS
 DIST. ONE - IGDEN UTAH
 ROADWAY DESIGN
 20th STREET
 INTERCHANGE
 PLAN PROFILE SHEET

DESIGN G.A.B. 12/73	CHECK R.N.M. 12/73	REVIEW
DRAWN F.B. 12/73	CHECK R.N.M. 12/73	DESIGN 384.5/73
QUANT G.A.B. 12/73	CHECK R.N.M. 12/73	R/W

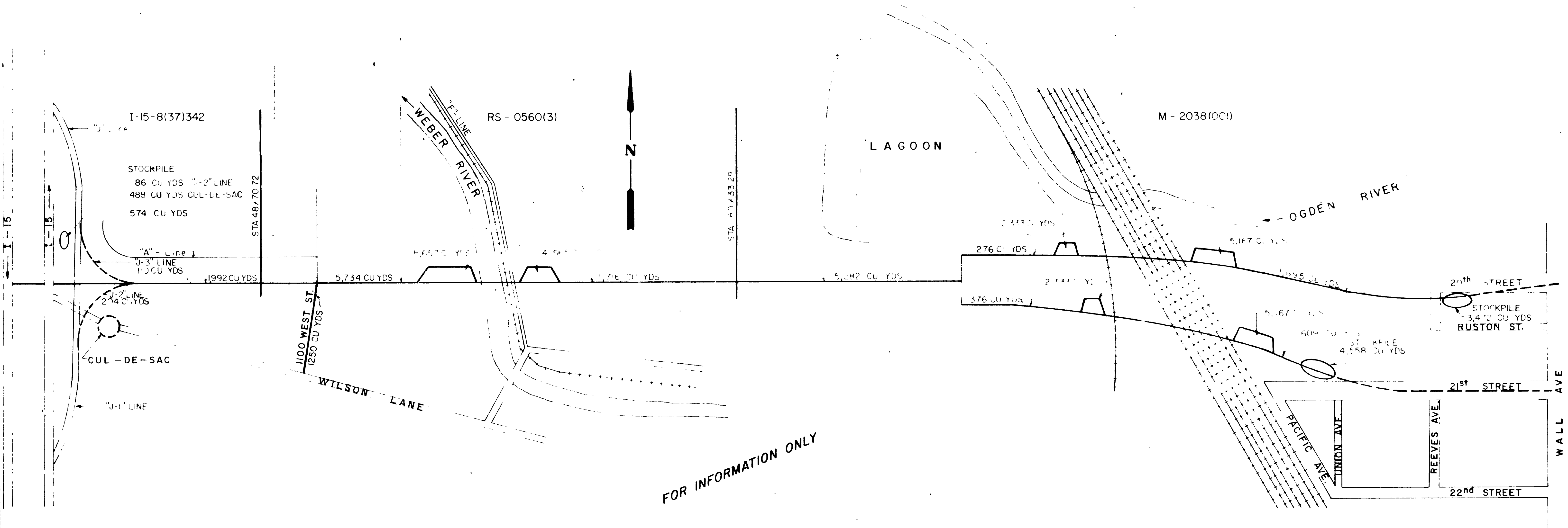
APPROVAL RECOMM. DATE 4-17-75
 APPROVED DATE 4-18-75
 PROJECT I-15-8(37)342

WEBER COUNTY

NO.	BY	DATE	TYPE	REMARKS

SURCHARGE DISTRIBUTION SHEET

Granular Borrow As Per Stock Piles	NEED 874 Cu Yds. AVAILABLE 8657 Cu Yds = 7,783 Cu Yds	NEED 7,650 Cu Yds AVAILABLE 8,271 Cu Yds = 611 Cu Yds	NEED 644 Cu Yds AVAILABLE 10,432 Cu Yds = 9,788 Cu Yds
Granular Borrow As Per Project	NEED 2860 Cu Yds AVAILABLE 3,127 Cu Yds	NEED 5,717 Cu Yds AVAILABLE 6,158 Cu Yds	NEED 5,242 Cu Yds AVAILABLE 5,242 Cu Yds
		W B NEED 276 Cu Yds AVAILABLE 2,333 Cu Yds	W B NEED 3,634 Cu Yds AVAILABLE 5,167 Cu Yds
		E B NEED 376 Cu Yds AVAILABLE 2,333 Cu Yds	E B NEED 2,750 Cu Yds AVAILABLE 5,167 Cu Yds



STATE DEPARTMENT OF HIGHWAYS
ROADWAY DESIGN

SURCHARGE DISTRIBUTION
20th STREET
I-15 TO WALL AVENUE

DESIGNER	G.B.	DATE	3/75	REVIEWER	JBA 5/75
CHECKER	GB	DATE	3/75	REVIEWER	RM 3/75
APPROVED	GB	DATE	3/75	REVIEWER	KR 3/75

WEBER COUNTY

I-15-B(37)342
RS 0560(3), M 2038(001) SHEET NO 20